



# EXPLOSION PROOF BLUETOOTH SERIAL ADAPTER

The Solexy Bluetooth wireless serial adapter is a cost effective solution for serial data transmission in hazardous location, where plug or un-plug to a serial port is not usually possible.

Available with RS232 and RS485/422 serial port, making it a flexible solution for M2M applications allowing the creation of a virtual cable to connect Ex laptop or tablet to serial ports.

With Solexy's SWA and SWS enclosures and their rugged construction water proof IP66, IP68, Nema 4 and 4X combined with ATEX, IECEx and North America certificates, Solexy offers a wireless device solution for installation in classified Ex areas (gas, dust and mining) and harsh environments, including temporary submersion.

## APPROVALS

### ATEX / IECEx CERTIFICATION

Zone 1, 2, 21 & 22

Ex I M2(M1) Ex db mb [ia Ma] I Mb (SWS only)  
II 2(1) G Ex db mb [ia Ga] IIC T5 Gb  
II 2(1) D Ex mb tb [ia Da] IIIC T100°C Db

### USA & CANADA CERTIFICATION

Class I, Division 1, Groups B, C and D  
Class II, Division 1, Groups E, F and G  
Class I, Zone 1, Groups IIB+H2

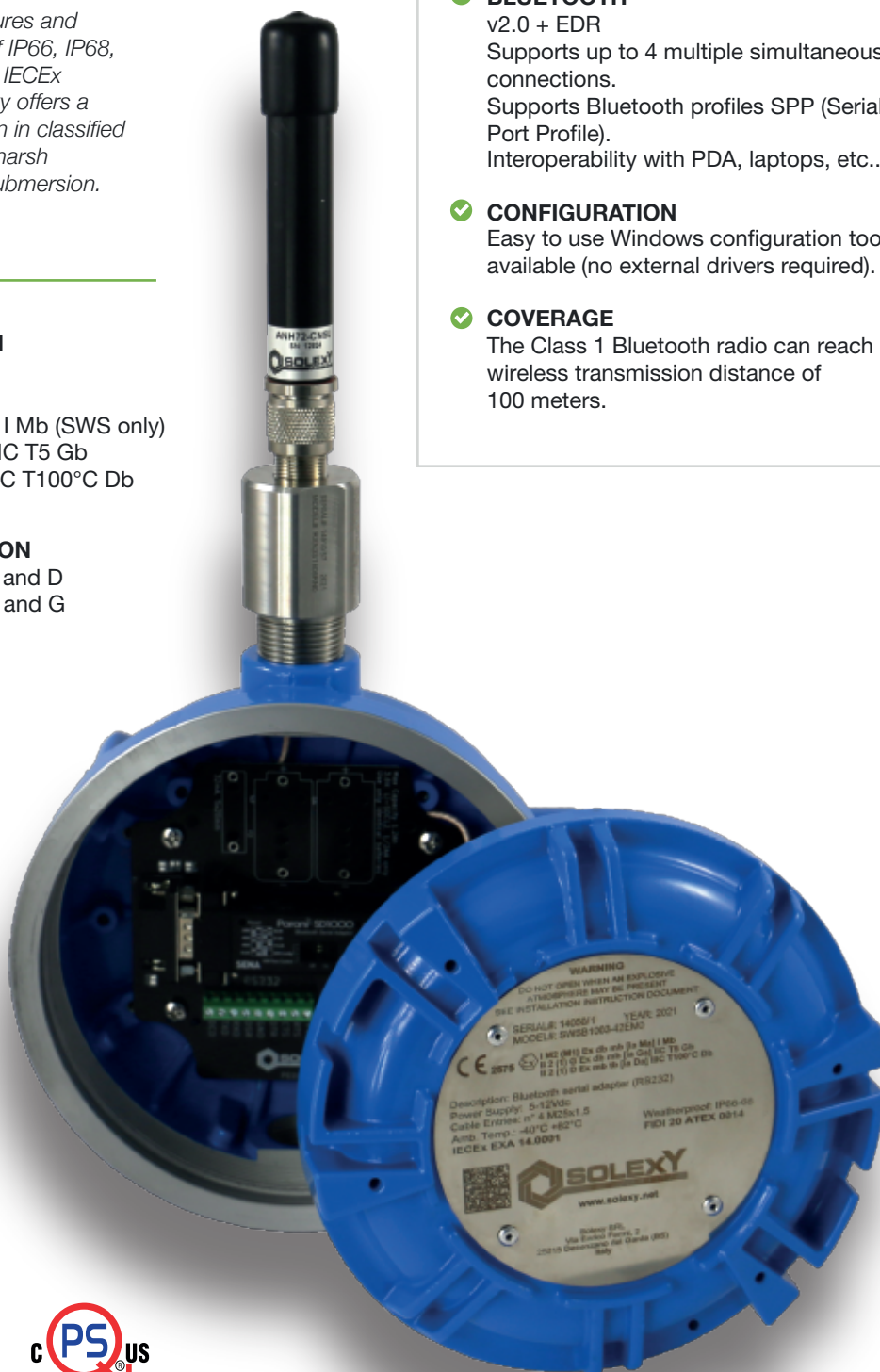
[For U.S. only]

Zone 21, Groups IIIC

[For U.S. only]

## FEATURES

- ✓ **OPERATING FUNCTIONS**  
RS232 and RS485/RS422 serial cable replacement.
- ✓ **BLUETOOTH**  
v2.0 + EDR  
Supports up to 4 multiple simultaneous connections.  
Supports Bluetooth profiles SPP (Serial Port Profile).  
Interoperability with PDA, laptops, etc...
- ✓ **CONFIGURATION**  
Easy to use Windows configuration tool available (no external drivers required).
- ✓ **COVERAGE**  
The Class 1 Bluetooth radio can reach wireless transmission distance of 100 meters.



SOLEXY SRL

Via Enrico Fermi, 2 - 25015 Desenzano del Garda (BS) ITALY . Phone: (+39) 030 787.0.787 - Fax: (+39) 030 787.0.777 . Email: info@solexy.net - Piva/VAT/CF 03471700983

## SPECIFICATIONS

### GENERAL

Power supply	5-12VDC
Power consumption	min 2 mA - max 80 mA
Ambient temp. range	USA & CANADA SWA series: -40°C (-40°F) +85°C (+185°F) SWS series: -40°C (-40°F) +85°C (+185°F)
	ATEX & IECEx SWA series: -40°C (-40°F) +83°C (+181°F) SWS series: -40°C (-40°F) +82°C (+179°F)
Weight	SWA: 2.3 kg (without antenna) SWS: 4.9 kg (without antenna)

### SERIAL INTERFACE

Serial speed	up to 921.6 kbps
CTR/RTS flow control DTR/DSR for loop-back & full transfer (RS232 only)	

### RADIO

Max TX power	+18 dBm
Max EDR Transmit power	+6 dBm
Receiver sensitivity	-88 dBm

### BLUETOOTH INTERFACE

Bluetooth	v2.0 + EDR
Class	1
Profile	SPP

## NOMENCLATURE

SWA	B13	03	- 42	1	X0
a	b	c	d		e

#### a - Enclosure

SWA	Aluminum polyester powder coated
SWS	Stainless steel AISI 316 (CF8M) electropolish

#### b - Device

B10	RS232 Bluetooth serial adapter
B13	RS232/485/422 Bluetooth serial adapter (N0 type pending)

#### c - Antenna connection <sup>(1)</sup>

03	n° 1 UXN antenna barrier (N Female)
(*)	Available antenna couplers with SMA, RP-SMA, isolated ground and surge protection. Contact Solexy to obtain the right code

#### d - Cable entries

42	n° 4 3/4" npt-f
44	n° 4 M25x1.5

#### e - Approvals

X0	Atex/IECEx Gas and Dust certified <sup>(3)</sup>
M0	Atex/IECEx Gas, Dust and mining certified <sup>(3)</sup>
N0	QPS CL1 DIV1 and North American Zones listed

Notes:

<sup>(1)</sup> Antenna not included

<sup>(2)</sup> Layout 2 (consult dimensional drawings for specific layout)

<sup>(3)</sup> Zone 1, 2, 21 & 22

## AVAILABLE ACCESSORIES

#### ANTENNAS:

ANF72:	flexible dipole (2.4GHz/2dBi)
ANH73:	heavy duty J-Pole (2.4GHz/4.35dBi)

**MOUNTING BRACKET:** KM-01: mounting kit for 2" pipe  
(see dedicated data sheet) KM-02: universal mounting kit



SOLEXY USA, LLC

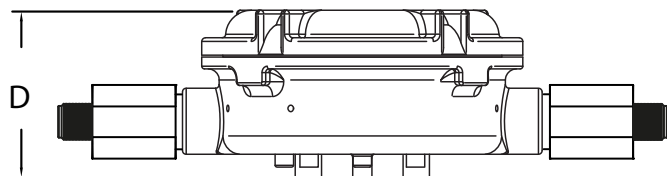
PO Box 628, West Chester, Ohio 45071 USA . Phone: (+1) 513.860.5465 - Fax: (+1) 513.860.5464 . Email: usa@solexy.net

www.solexy.net





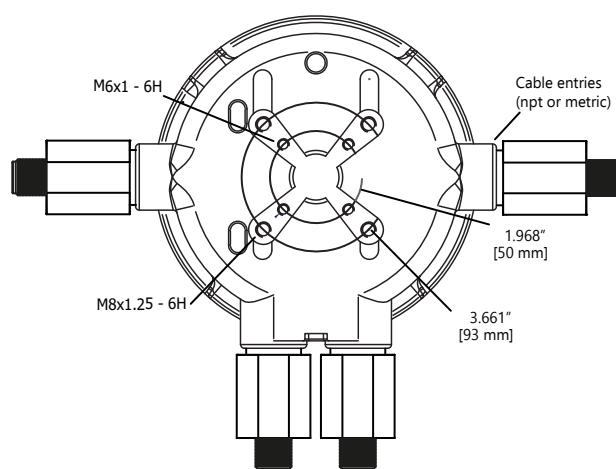
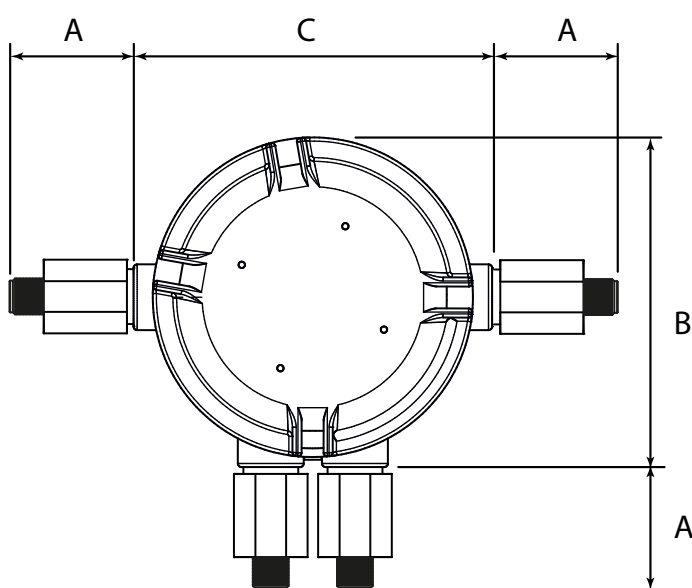
# DIMENSIONAL DRAWINGS



In order to determine overall dimension of a specific unit pls follow instructions:

1) Select the specific layout (you can find it in the product nomenclature)

2) Consider only the antenna coupler dimension (A) that you find in the layout

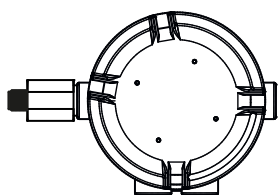


Model	A (*)	B	C	D
SWA HWA	58,5 mm [2.30"] metric coupler 70 mm [2.76"] npt coupler	179,8 mm [7.08"]	180 mm [7.09"]	89,5 mm [3.52"]
SWS HWS	58,5 mm [2.30"] metric coupler 70 mm [2.76"] npt coupler	180,5 mm [7.11"]	196 mm [7.72"]	90 mm [3.54"]

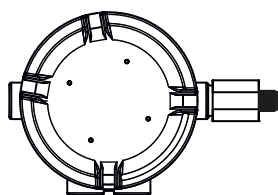
(\*) max dimension related to RX or SX coupler with N female antenna connector

## TYPICAL LAYOUTS \*\*

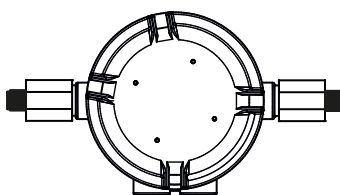
Layout 1



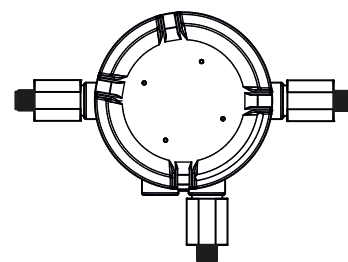
Layout 2



Layout 3



Layout 4



(\*\*) layout type specified in device datasheet



SOLEXY SRL

Via Enrico Fermi, 2 - 25015 Desenzano del Garda (BS) ITALY . Phone: (+39) 030 787.0.787 - Fax: (+39) 030 787.0.777 . Email: info@solexy.net - Piva/VAT/CF 03471700983